

TO: Board of Directors

FROM: Garn Christensen, Superintendent

SUBJECT: Public Hearing for Redistricting of Board Director Districts

DATE: May 9, 2022

CATEGORY

Informational Discussion Only Discussion & Action Action

BACKGROUND INFORMATION AND ADMINISTRATIVE CONSIDERATION

At the Board's meeting on March 14, 2022, you reviewed the proposed changes to the current Board director districts. The next step in the redistricting process is to hold a public hearing to allow for public comments to be heard for or against any part of the proposed boundary changes. A legal ad was published in the Wenatchee World on April 30, 2022 regarding this public hearing.

Here is the information from the March 14th Board memo explaining the boundary changes:

Every 10 years the nation completes a census. After each decennial census, the Revised Code of Washington requires school districts' director districts to be updated to account for changes in population per RCW 28A.343.040 (1)(a). Redistricting has no impact on existing school attendance boundaries.

Data from the 2020 decennial census was released in August of 2021 (delayed by the pandemic). Bob Schweitzer, Sammamish Data Systems, Inc. has provided the following documents and explanations:

Attached is a series of maps and reports.

- *Page 1: The first map is an overall Eastmont School District map.*
- *Pages 2-3: This is followed by the two base population reports showing very good population counts per district using the guideline of population 'as equal as possible'.*
- *Pages 4-6: These maps are overviews of each district in poster form with street labels in poster sized PDFs to easy zoom and pan for more detail.*

- *Page 7: This is an overview of the previous districts in a wide green line, so the Board can quickly see where the changes are located.*
- *Pages 8-12 are insets showing the areas of change with the old district line in a wide green line to assist quickly assessing these changes in detail.*

I feel this proposed plan meets all the statutes of RCW 29A.76.010. Equal in population as possible, contiguous, compact, no disfavoring any groups/parties, and protecting Areas of Common Interest.

ATTACHMENTS

Maps & Population Reports

FISCAL IMPACT

Required to complete

Eastmont School District -
Proposed Board Districts as
Approximated Using Census
2020 Geography

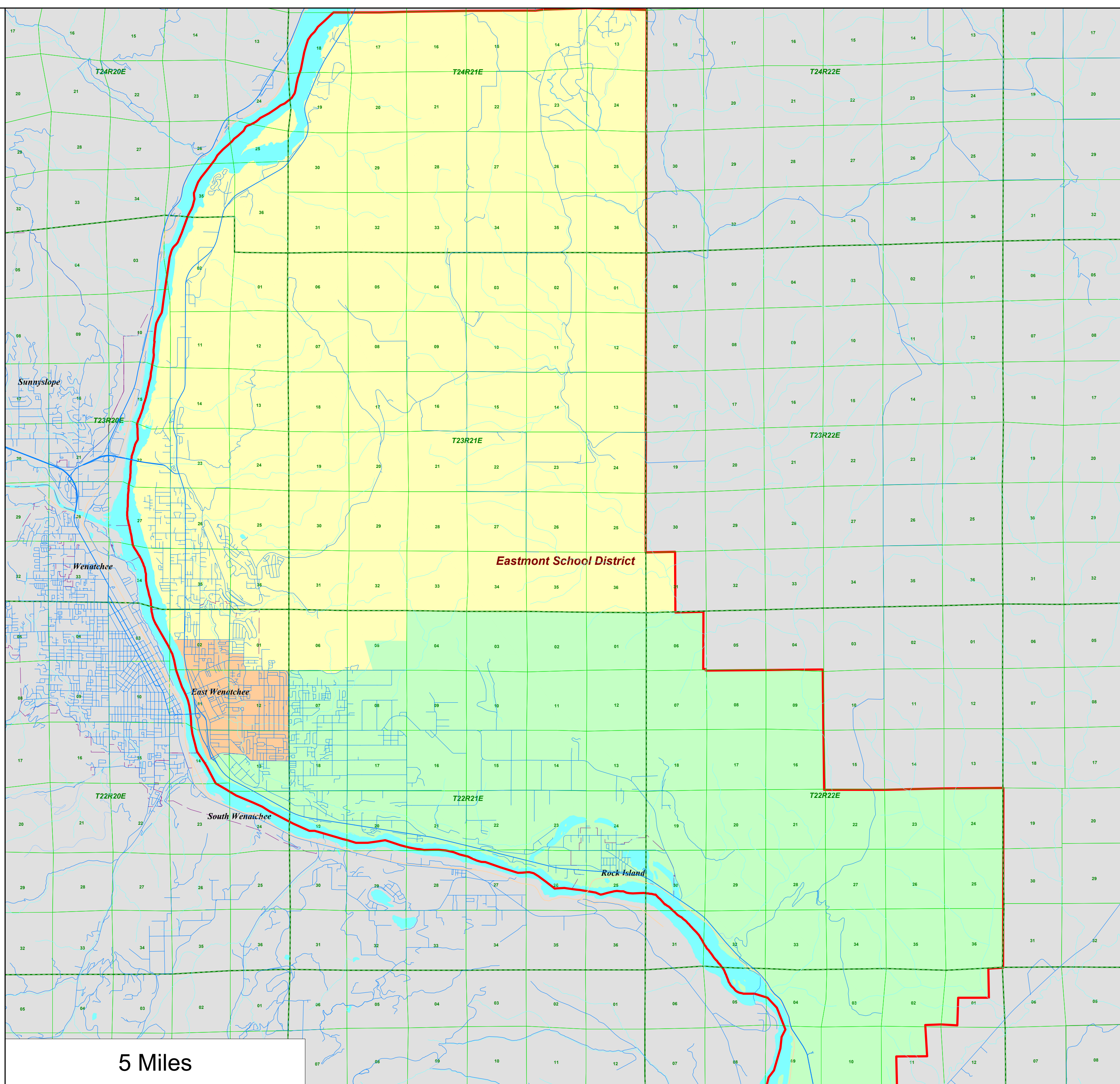
- 1st District
- 2nd District
- 3rd District

City Limits

District Outline

Sectional Centers

Townships



01/13/2022

Eastmont School District District Summary Report

Director District Number	Ideal Population	Total Population	Deviation from Ideal	% Deviation from Ideal	White Population	Hispanic Origin (of any race)	Non White & Mixed
1st	11,357	11,371	14	0.12	8,373	2,608	2,998
2nd	11,357	11,338	-19	-0.17	7,299	4,101	4,039
3rd	11,357	11,362	5	0.04	7,418	3,844	3,944
Totals.....		<u>34,071</u>	<u>0</u>		<u>23,090</u>	<u>10,553</u>	<u>10,981</u>

Eastmont School District

Summary of Population by Race and Hispanic Origin

District Number	Total Population	Total Population by Race							Two or More Races	Hispanic Origin (of any race)
		Single Race								
		Total	White	Black African American	American Indian and Alaska Native	Asian	Native Hawaiian and Other Pacific Islander	Other Race	Total	
1st	11,371	10,083	8,373	42	136	166	14	1,352	1,288	2,608
2nd	11,338	9,811	7,299	32	179	118	22	2,161	1,527	4,101
3rd	11,362	9,718	7,418	54	177	107	23	1,939	1,644	3,844
Totals.....	<u>34,071</u>	<u>29,612</u>	<u>23,090</u>	<u>128</u>	<u>492</u>	<u>391</u>	<u>59</u>	<u>5,452</u>	<u>4,459</u>	<u>10,553</u>

Eastmont School District -
Proposed Board Districts as
Approximated Using Census
2020 Geography

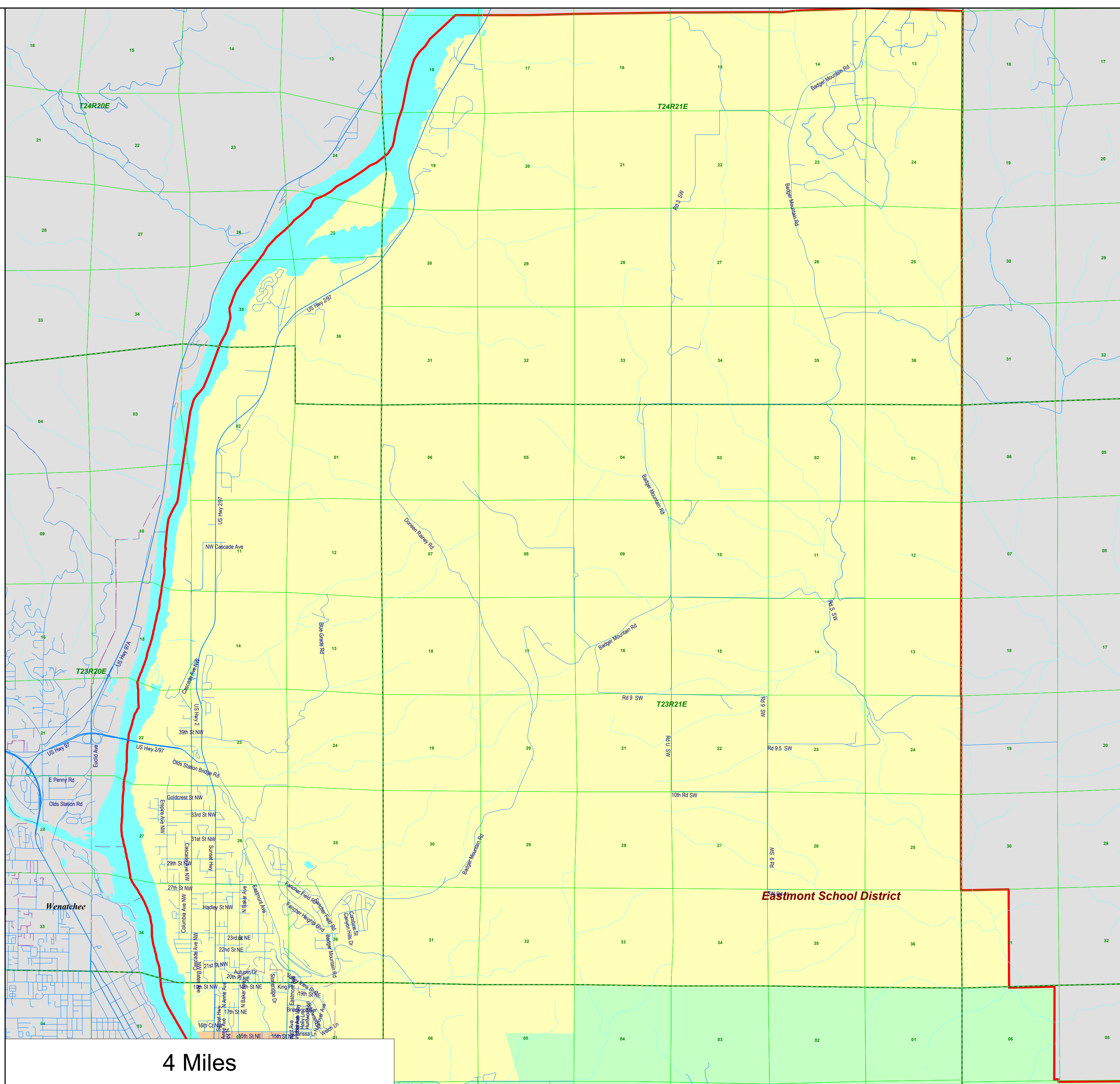
- 1st District
- 2nd District
- 3rd District

City Limits

District Outline

Sectional Centers

Townships



Eastmont School District - Proposed Board Districts as Approximated Using Census 2020 Geography

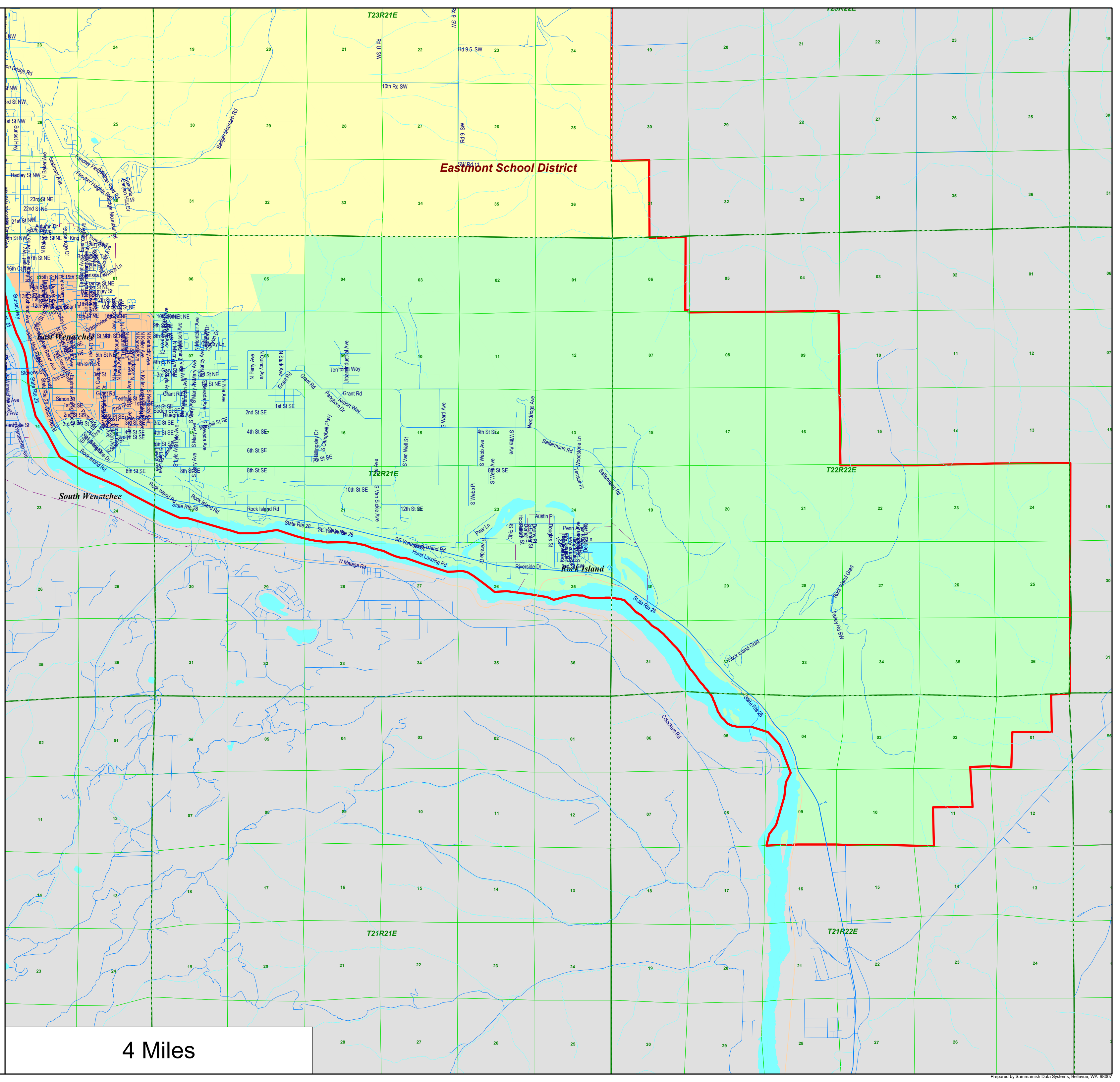
- 1st District
- 2nd District
- 3rd District

City Limits

District Outline

Sectional Centers

Townships



Eastmont School District - Proposed Board Districts as Approximated Using Census 2020 Geography

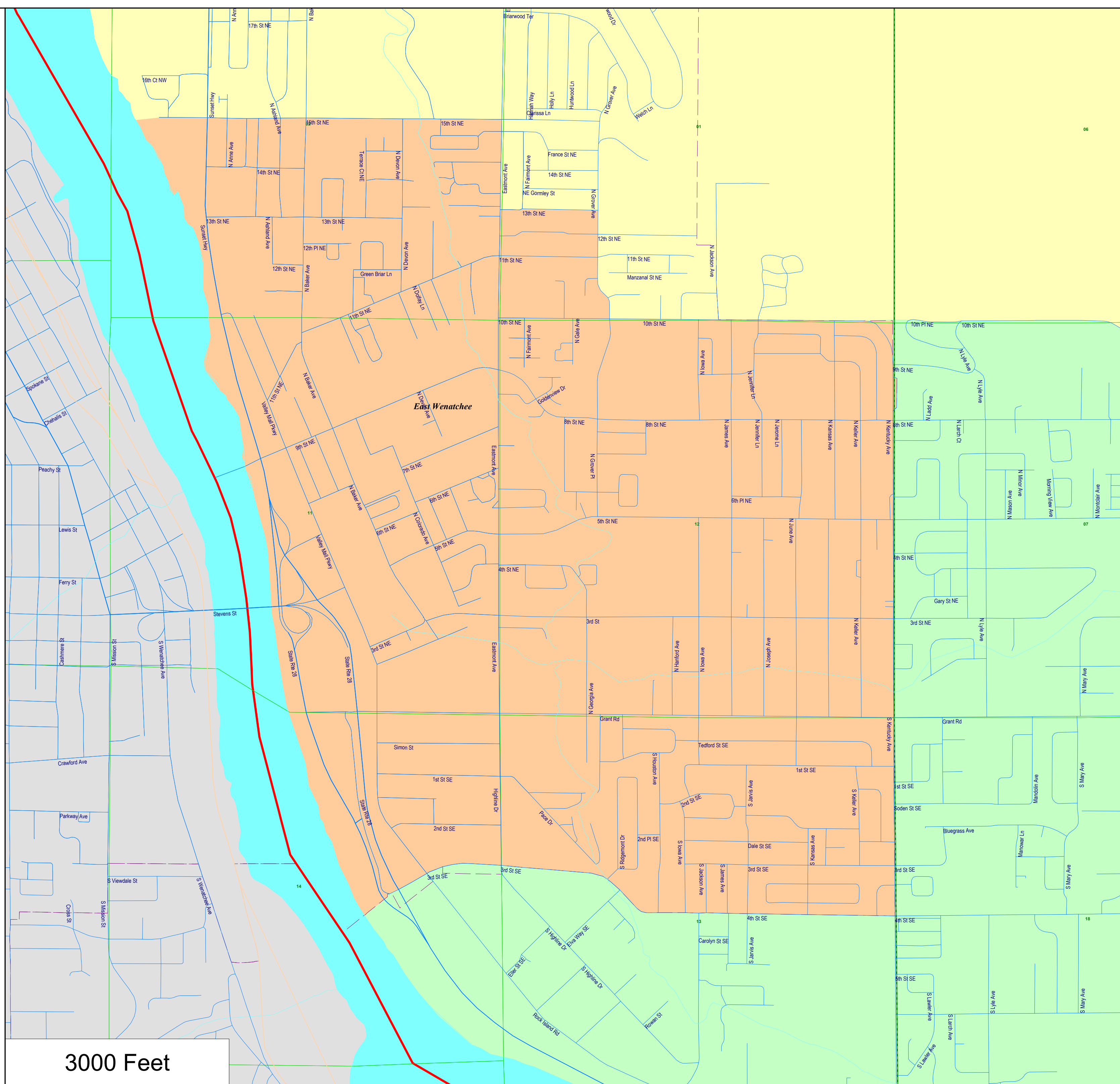
- 1st District
- 2nd District
- 3rd District

City Limits

District Outline

Sectional Centers

Townships



3000 Feet

Eastmont School District - Proposed Board Districts as Approximated Using Census 2020 Geography

- 1st District
- 2nd District
- 3rd District

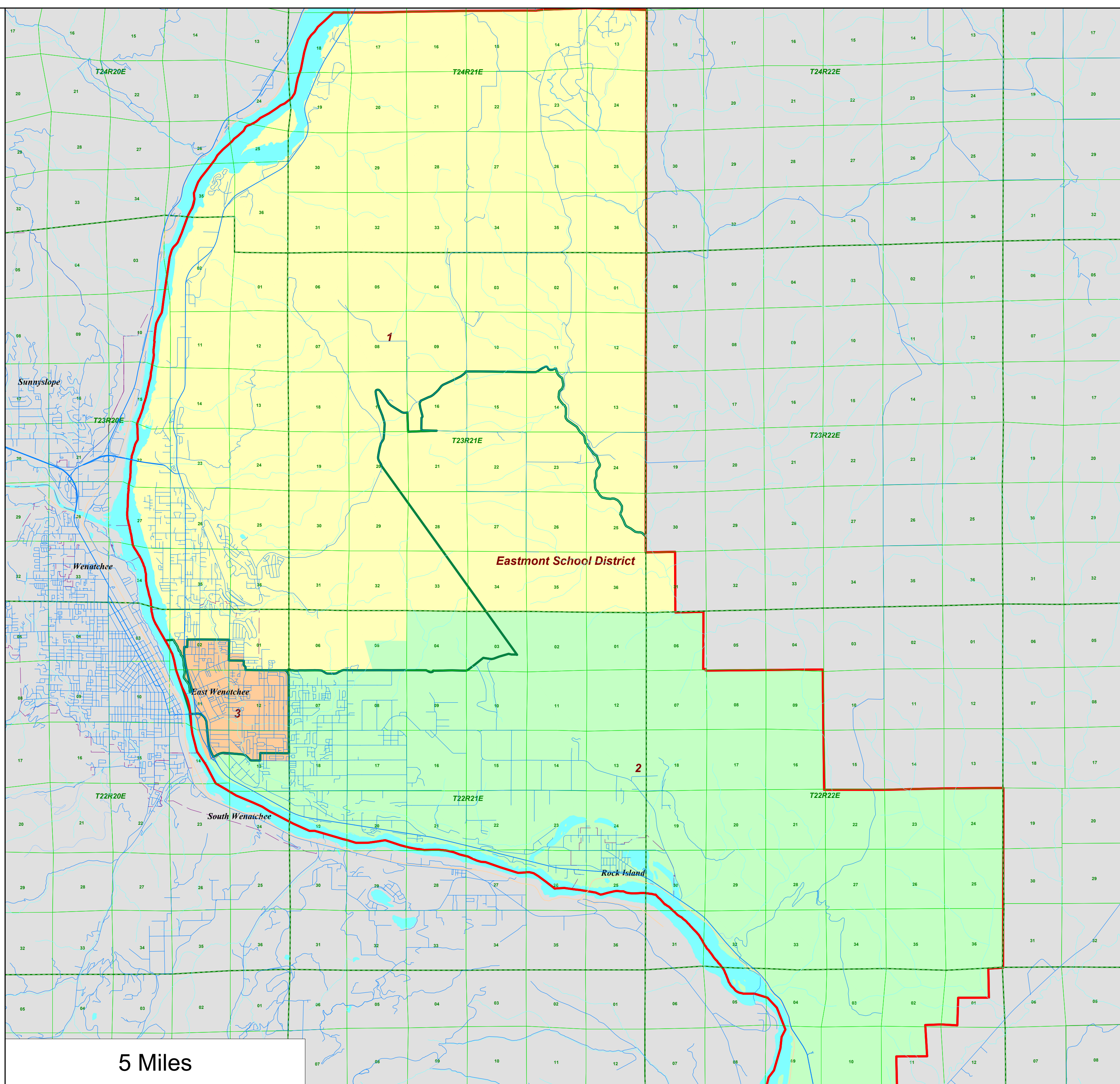
City Limits

Previous District Outline

District Outline

Sectional Centers

Townships



Eastmont School District
 - Proposed Board
 Districts as Approximated
 Using Census 2020
 Geography

- 1st District
- 3rd District

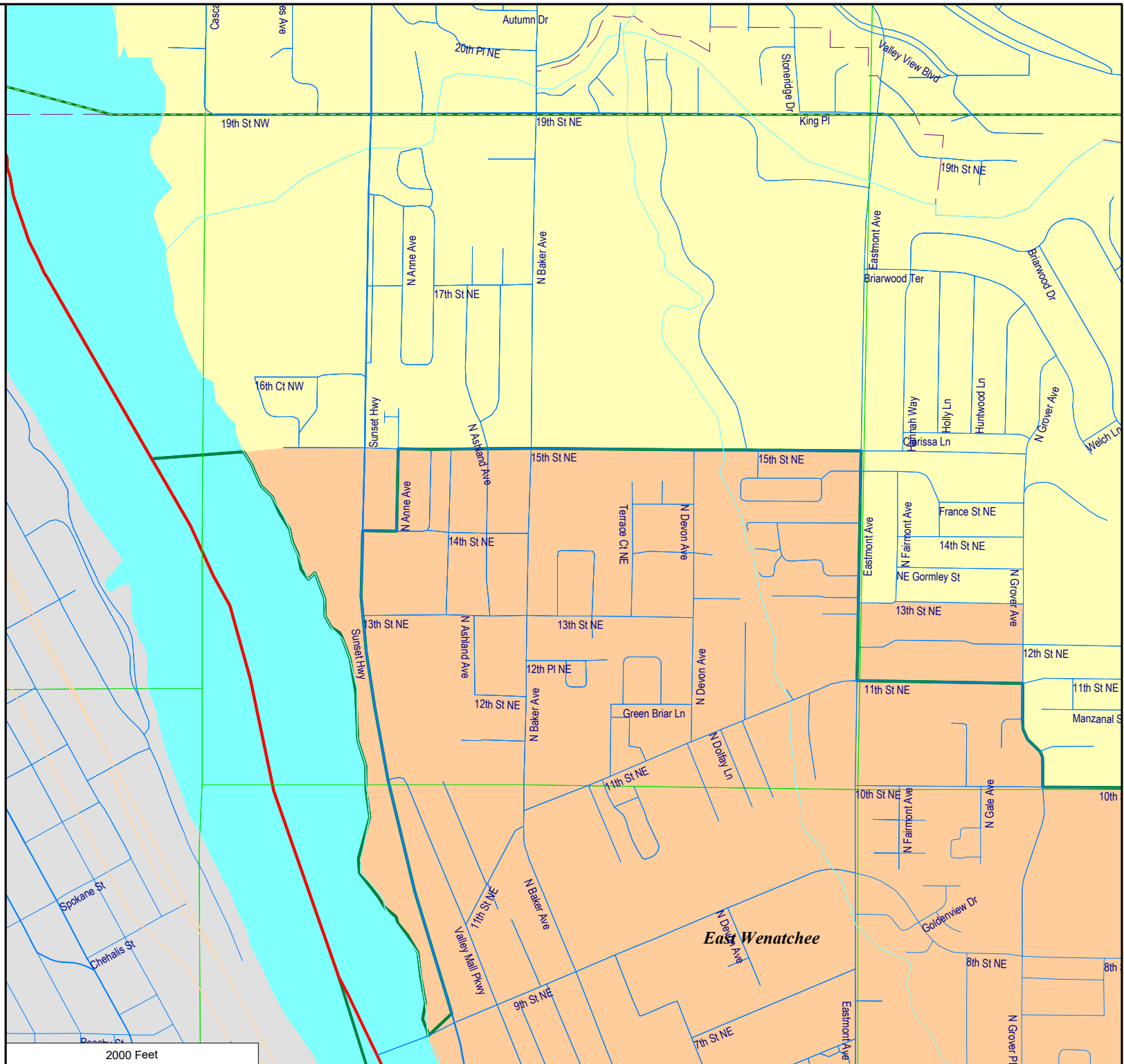
City Limits

Previous District Outline

District Outline

Sectional Centers

Townships



Eastmont School District
 - Proposed Board
 Districts as Approximated
 Using Census 2020
 Geography

- 1st District
- 2nd District
- 3rd District

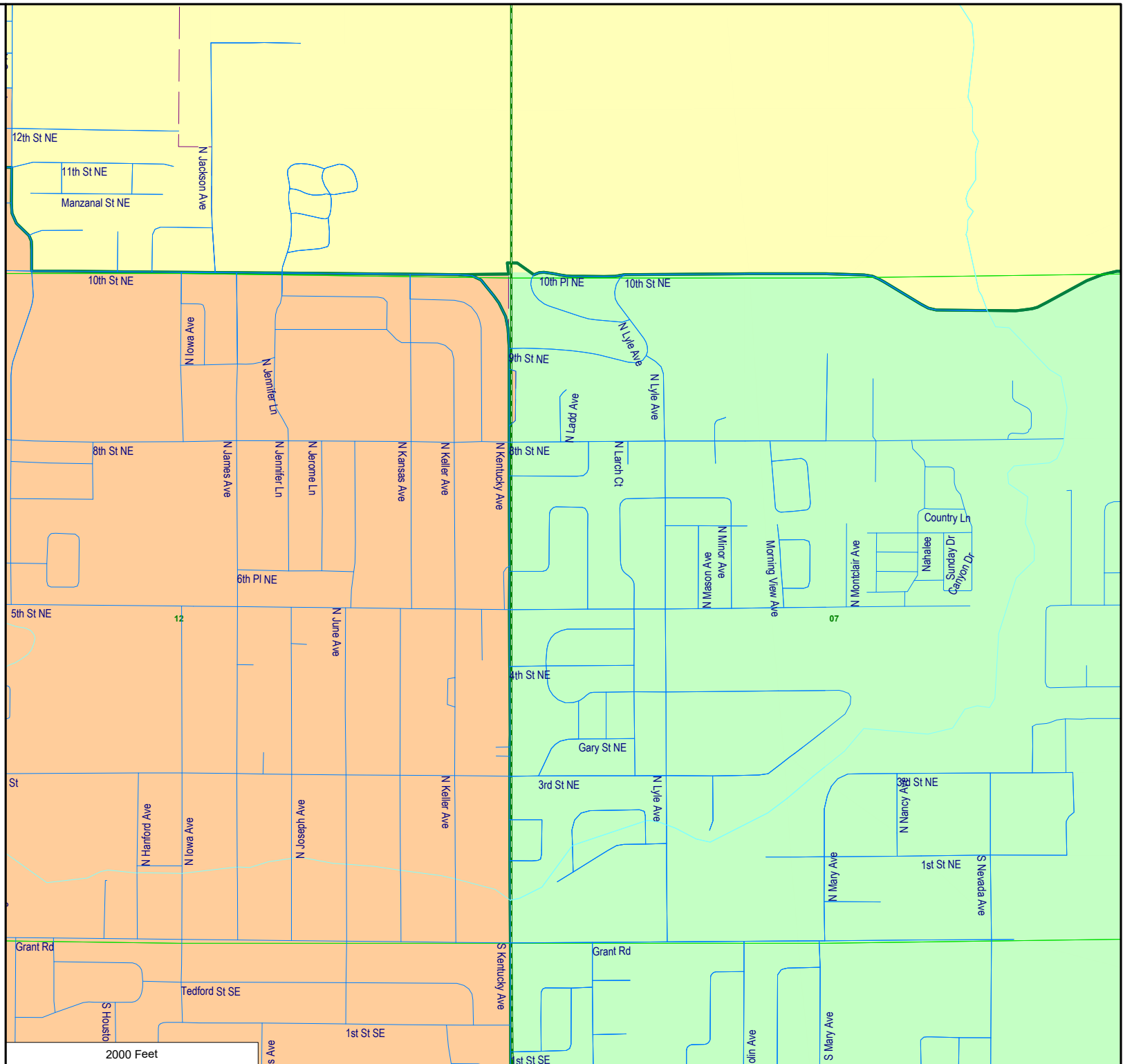
City Limits

Previous District Outline

District Outline

Sectional Centers

Townships



Eastmont School District
 - Proposed Board
 Districts as Approximated
 Using Census 2020
 Geography

- 2nd District
- 3rd District

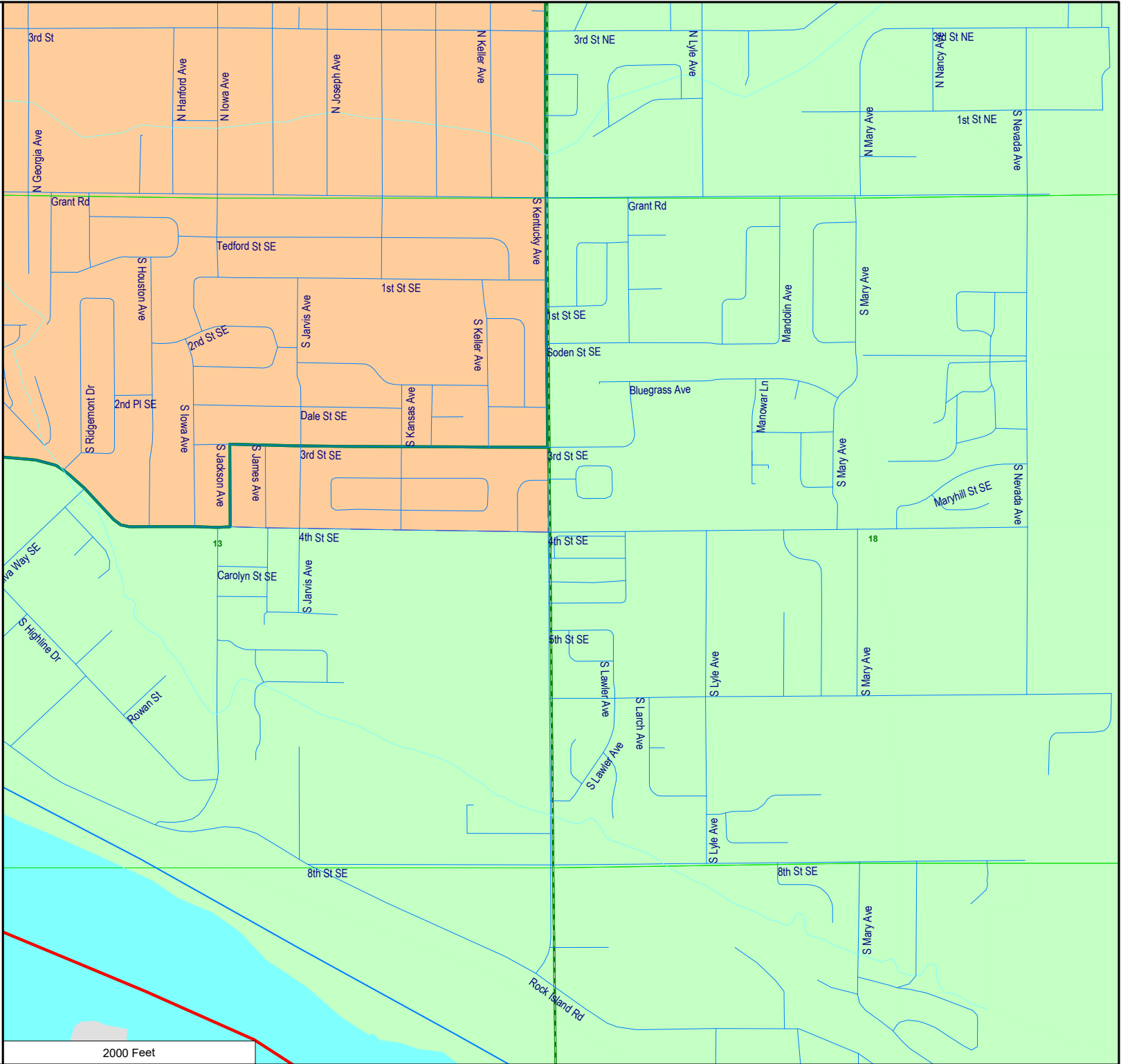
City Limits

Previous District Outline

District Outline

Sectional Centers

Townships



Eastmont School District
 - Proposed Board
 Districts as Approximated
 Using Census 2020
 Geography

- 2nd District
- 3rd District

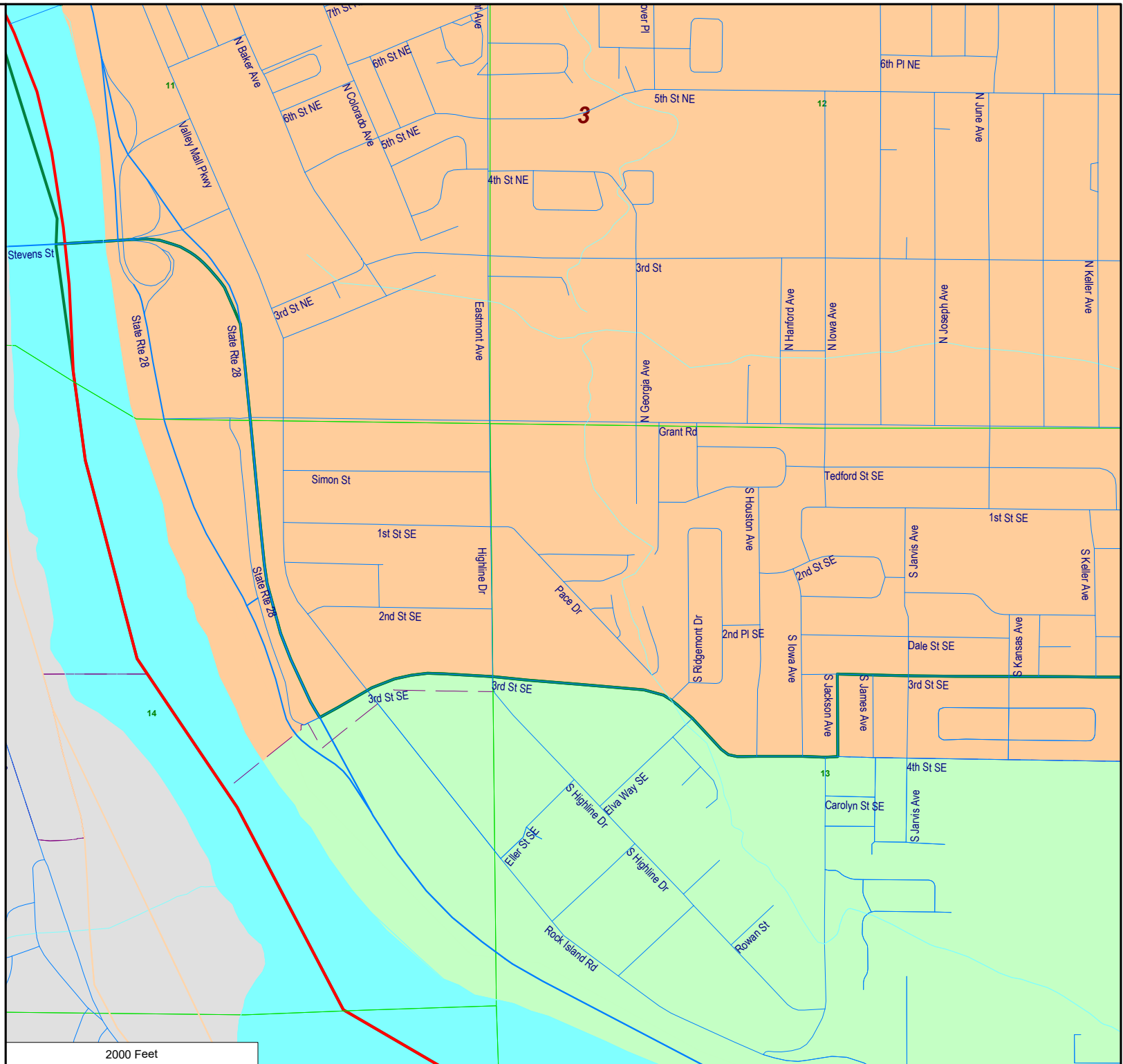
City Limits

Previous District Outline

District Outline

Sectional Centers

Townships



Eastmont School District
 - Proposed Board
 Districts as Approximated
 Using Census 2020
 Geography

- 1st District
- 2nd District

City Limits

Previous District Outline

District Outline

Sectional Centers

Townships

