

October 2022 Special Edition



Eastmont Focus: Phase 2 Bond

The Right Projects. The Right Reasons. The Right Time.

Dear Voters in the Eastmont School District,

We are sincerely grateful for the tradition of our community's support of the Eastmont School District. In 2016, the voters approved a capital levy, which funded Phase 1 of building modernization and expansion. We were able to add 20 classrooms to five of our elementary schools to accommodate growth and lower class sizes, and added four new cafeterias as well. At that time, we promised that we would "finish the job" with Phase 2. Now is that time to bring all of our buildings up to modern standards for safety and efficiency.

In broad strokes, if this bond proposition is approved, it will significantly enhance school safety by creating secure, single points of entry at each school. It will remove portables across the district and replace them with brick and mortar classrooms. And it will put an end to outdoor "hallways" between

sections of schools, will upgrade our aging high school athletic complex, and will build a transportation facility on already owned Eastmont property.

The bulk of our current schools were built between 1939 and 1977.* We have modernized most of the oldest ones to some extent, and our maintenance crews have done their level best to maintain building systems, such as electrical and HVAC, that are at their end of life. While it is never easy to ask our community for their valuable tax dollars, the longer we wait – the higher the building costs become.

It is comparable to having an older year car that has served the family well. Do we continue to spend money to repair the car to the point where we can't find parts anymore, or do we consider purchasing a newer model that is more reliable and that we repair less frequently? It is an important decision for all of us, and for the future of our school district.

This proposal greatly supports Eastmont's efforts to provide safe and quality schools, and demonstrates responsible use of taxpayer resources. It is important to remember that a community is known by the schools that it keeps.

Thank you for taking the time to read through this publication. If you have further questions or concerns, please call any school principal, anyone at the district office, (509-884-7169), or email me personally at BergB@eastmont206.org.

Please remember to vote by November 8, 2022.

In Service,


Becky Berg
Superintendent

* See page 7 for a list of schools and their ages.

Eastmont School District does not discriminate in any programs or activities on the basis of sex, race, creed, religion, color, national origin, age, veteran or military status, sexual orientation, gender expression or identity, disability, or the use of a trained dog guide or service animal and provides equal access to the Boy Scouts and other designated youth groups. Inquiries regarding compliance and/or grievance procedures may be directed to the school district's coordinators for Title IX/RCW 28A.642, Section 504, or the ADA. The District does not tolerate sexual harassment, harassment, intimidation, or bullying. Report this conduct to principals, administrators, or Kayla Brown.

Civil Rights Coord., Title IX / 28A.640 RCW Officer and ADA Coord.
Kayla Brown
Exec. Director of Human Resources
Eastmont School District
800 Eastmont Ave.
East Wenatchee, WA 98802
509.884.7169

Section 504 Coordinator
Matt Charlton, Asst. Superintendent/Secondary Ed.
Spencer Taylor, Exec. Director of Elementary Ed.
Eastmont School District
800 Eastmont Ave.
East Wenatchee, WA 98802
509.884.7169



From the Eastmont School Board

October 2022

Dear Eastmont Voters,

Because of the support of our community, the Eastmont School District has some of the finest school facilities in the state. Even so, more work is needed to lift all of our buildings to the same standards of excellence. The trust expressed by the community in passing bonds/levies is the most valuable aspect of the District's relationships with the people it serves.

In 2016, voters passed a 6 year Capital Levy that added cafeterias and 20 additional classrooms at Cascade, Lee, Kenroy and Rock Island Elementary Schools to reduce class sizes. Eastmont High School's baseball restrooms were replaced at that time as well.

The work in Phase 1 is ending, and it is time to implement the last phase of our current facilities plan. The goals for Phase 2 are:

- **Improvements to enhance safety and security, tending to district-wide infrastructure, and critical building repairs.** Examples are: eliminating outdoor 'hallways' at Cascade and Kenroy Elementary Schools, creating secure entry vestibules at every school that does not currently have one, providing video cameras at entrances, and selectively upgrading paving, fencing, and doorway access control hardware.
- **Eliminate our reliance on inefficient portable classrooms at Cascade, Kenroy, Lee Elementary Schools and at Sterling Junior High School.** After using our portables to help with the staging of students while construction is ongoing, the portables will be replaced by new permanent classrooms that will be connected to the rest of the school. The work at these four sites will also include replacing, expanding, renovating, improving and upgrading play fields, parking, student pickup/drop off areas.
- **Expand Sterling Junior High School,** including constructing permanent classrooms to replace existing portable classrooms; constructing additional locker rooms and weight room; expanding parking and student pickup/drop off areas.
- **Enhance our aging athletic complex at Eastmont High School.** Students' physical safety will be safeguarded by the replacement of the track, upgrades to the football field, soccer field, tennis courts and the addition of softball fields. The track at Eastmont Junior High will also be repaired and resurfaced.
- **Relocate and build a transportation and maintenance facility** on land already owned by the school district, at the intersection of Grant Road and North Perry Avenue

You may wonder, 'Why now?' We know that there is never a great time to ask our voters for money, and we don't make these requests without careful and deliberate consideration. We believe that the time to initiate Phase 2 is now, rather than later. If we wait, construction costs will only escalate. The improved physical safety of our students and staff cannot wait. Phase 2 will ensure that as our community grows we are prepared to grow with it. Finally, the state will give us an additional \$16.5 million or more in matching funds to complete Phase 2.

The Eastmont community has a legacy of advocating for and supporting its children. We are honestly grateful for your support of our past proposals. The money invested in the future of our children via this Bond is yours, not the District's. Our primary mission is to educate our valley's future leaders, to enable future generations to soar to their greatest potential, and to ensure our students are equipped to face the future. Completing Phase 2 of our facilities plan will help us reach those goals.

The Eastmont School Board respectfully asks for your kind consideration of this Bond measure.

Please read the enclosed information, visit our website, or call for an appointment if you have additional questions.

Sincerely,

Whitney Smith
Board President

Cindy Wright
Board Vice President

Jason Heinz
Board Member

Steve Piccirillo
Board Member

Meaghan Vibbert
Board Member

Becky Berg
Current Superintendent

Garn Christensen
Superintendent 2007-2022

Here's what our previous bonds have done...

2001 Bond



Construction of Clovis Point School



Construction of Eastmont Junior High School

2010 Bond

Grant Elementary Modernization



Sterling Junior High Modernization



Eastmont High School Modernization

Bonds Are for Building

A bond provides funding for large capital projects such as purchasing property for schools, constructing new schools, or modernizing existing schools. Bonds are sold to investors who are repaid with interest over time from property tax collections, generally between 10-25 years. **Bonds require a super majority to pass (60%).**



Phase 1: 2016 Capital Levy Projects

The 2016 Capital Levy added cafeterias and 20 additional classrooms divided between Cascade, Lee, Kenroy and Rock Island elementary schools, and replaced Eastmont High School's baseball restrooms.



The outside of Cascade Elementary's new cafeteria. The Phase 1 Capital Levy funded new cafeterias and kitchens at four elementary schools.



Rock Island Gym



New Classrooms at Cascade, Lee, Kenroy and Rock Island



Cascade Elementary Cafeteria



Kenroy Cafeteria

Phase 2: 2022 Bond Proposal

Phase 2 is the final phase of our current facilities improvement plan. The Eastmont School District Board of Directors passed a resolution to submit a \$185 million bond proposition to district voters for the November 8, 2022 general election ballot.

Schools & Ages

Original dates that our current buildings opened and their age in years.

	Year Opened	Age (Years)
Rock Island Elem.	1936	86
Grant Elem.	1953	69
Lee Elem.	1957	65
Kenroy Elem.	1958	64
Sterling JHS	1962	60
Cascade Elem.	1967	55
Eastmont HS	1977	45
Eastmont JHS	2003	19
Clovis Point Elem.	2005	17

Address Security Concerns



Modern times require modern security measures. Many of our schools were built decades ago and have multiple points of entry. For example, Cascade Elementary has 60 exterior doors. Safety and security upgrades as part of Phase 2 include retrofitting these schools so that they have a single point of entry and line of sight supervision.

Update Aging Schools with Safe, Modern Facilities

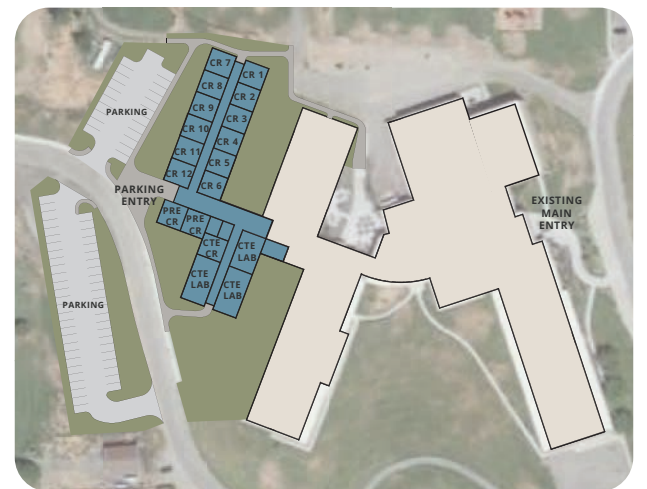
Phase 2 will bring all of our schools up to modern standards, replace aging mechanical infrastructure, correct safety issues, update playgrounds and improve parking and traffic flow. The bond will also fund construction of new classrooms at Cascade, Kenroy, Lee and Rock Island elementary schools and Sterling Junior High School, replacing inefficient and less secure portables. Visit the District website at cutt.ly/phase2bond for concept plans for each school.



Portables like these at Kenroy Elementary will be replaced by new classrooms.



Traffic backups, like this one at Lee Elementary, are dangerous for everyone, especially kids.

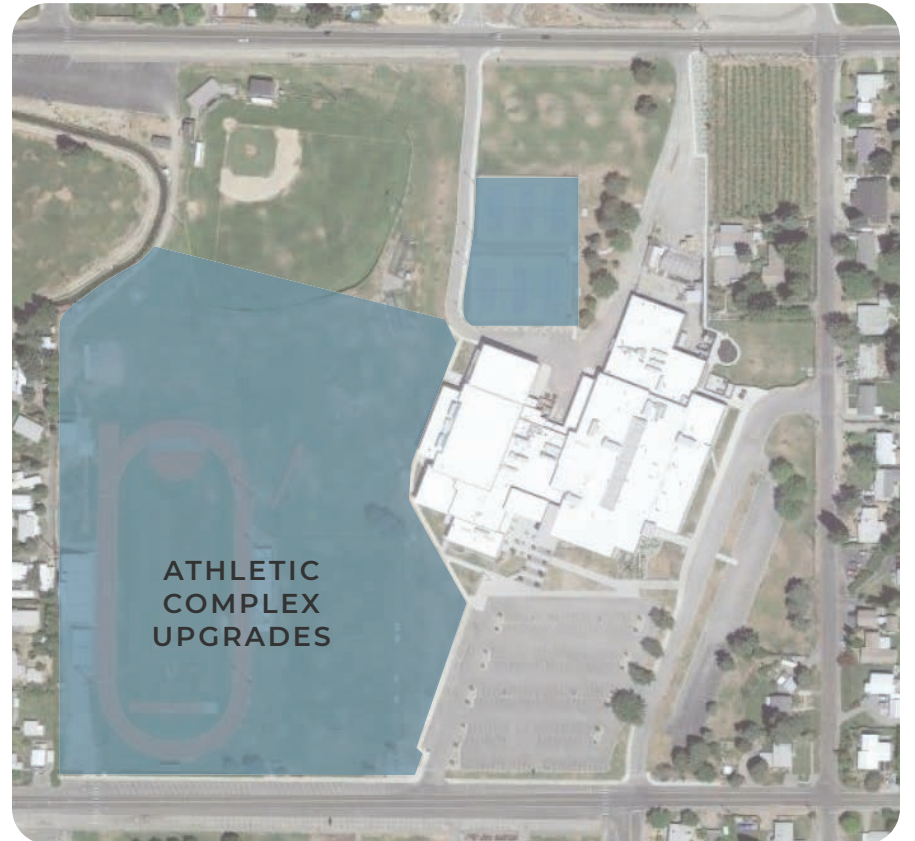


The Phase 2 Bond will fund the construction of a new wing of classrooms, Career & Technical Education (CTE) learning spaces, music rooms, add parking and improve traffic flow at Sterling Junior High School. View the plans for Phase 2 upgrades at each school at cutt.ly/phase2bond.

Phase 2: 2022 Bond Proposal

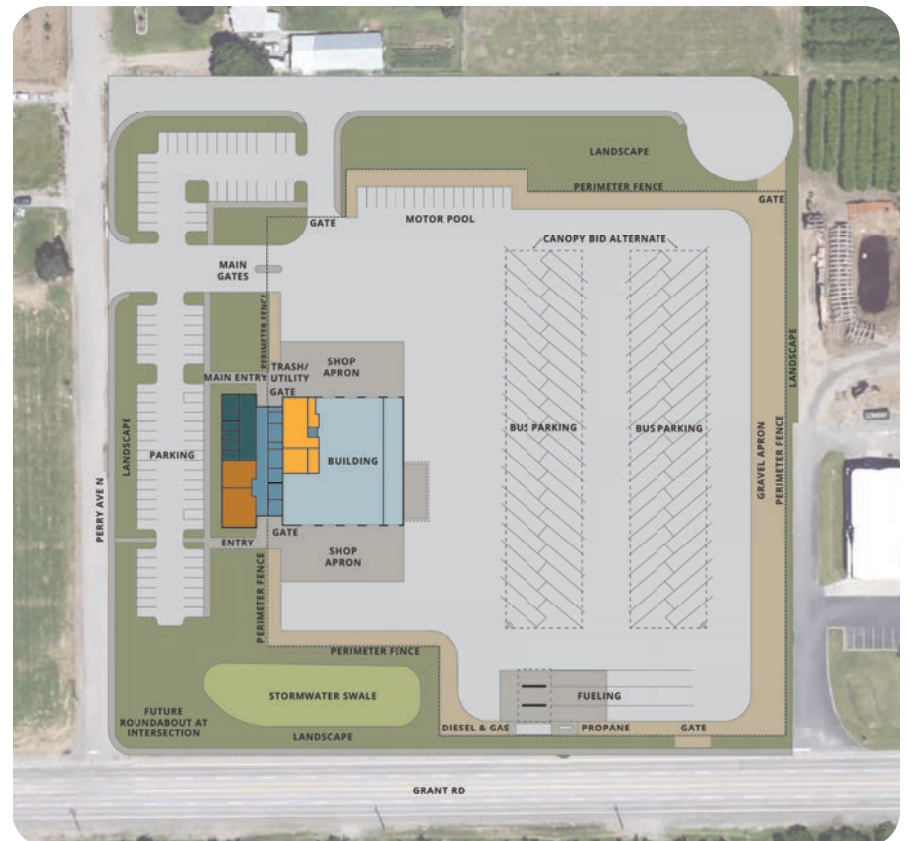
Upgrade Eastmont High School's Aging Sports Complex

Students' physical safety will be protected by the replacement of the track, upgrading the football field, soccer field and tennis courts, and adding a softball field adjacent to the EHS baseball field. The track at Eastmont Junior High will also be repaired and resurfaced.



Build A New Transportation Cooperative Center

We operate 43 buses out of a facility designed for 18. The current outdated facility will be replaced with a modern transportation center, centrally located within the district. We will work with other nearby districts and agencies in a service cooperative to optimize its use. The new facility will be built on land already purchased with voter-approved 2016 capital levy funds.

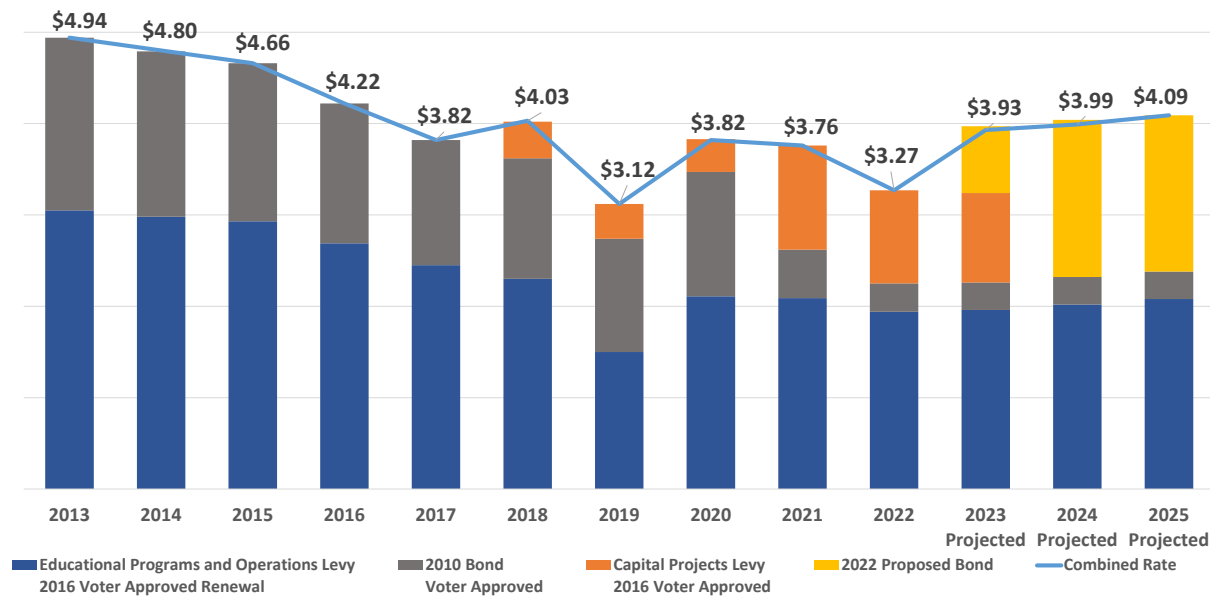


The new transportation center will provide the District with modern facilities while also creating opportunities to service vehicles for other districts and agencies.

Phase 2: Facts & Figures

What Will It Cost?

If voters approve this bond, the rate per \$1,000 assessed value will increase from \$3.47 in 2022 to an estimated \$3.93 in 2023 and \$3.99 in 2024. For background, the combined rate in 2013 was \$4.94. Individual tax rates will depend on a property's assessed value by Douglas County Assessor's Office.

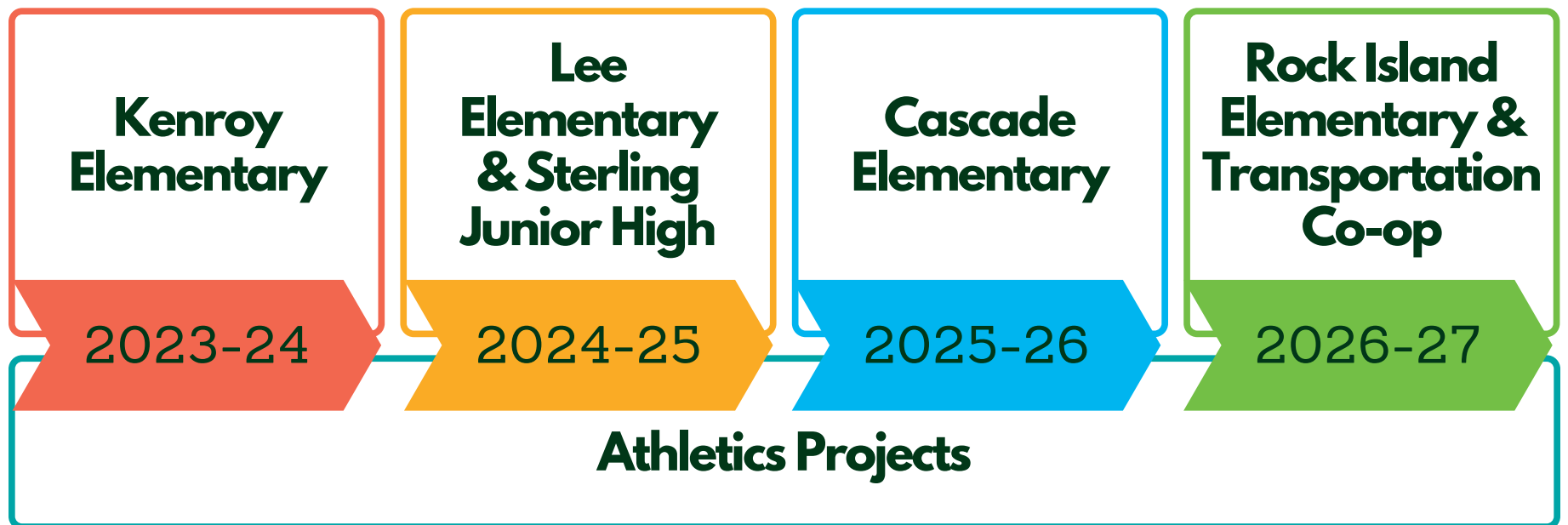


Why Now?

We know that there is never a great time to ask our voters for money, and we take this responsibility to heart. We believe that this timing makes sense because construction costs escalate the longer we wait, the physical safety of our students and staff cannot wait, we are ensuring that we have the capacity for more students as new businesses come to the Valley, and at this time, the state will give us an additional \$16.5 million or more in construction match to get this work done.

How Long Will It Take?

Because these security modernization upgrades are badly needed, the District has an aggressive timeline for completing them. We plan to tackle one or two projects each year while also working on the athletics upgrades.



Visit cutt.ly/phase2bond for comprehensive details on the Phase 2 Bond.

- Video presentation by District staff
- Detailed designs of upgrades for each school
- Bond tax calculator
- Additional voting information



Election Day is Tuesday, November 8 Ballot Drop-Off Locations & Voter Registration Information:

Douglas County Public Service Building
148 19th St NW
East Wenatchee

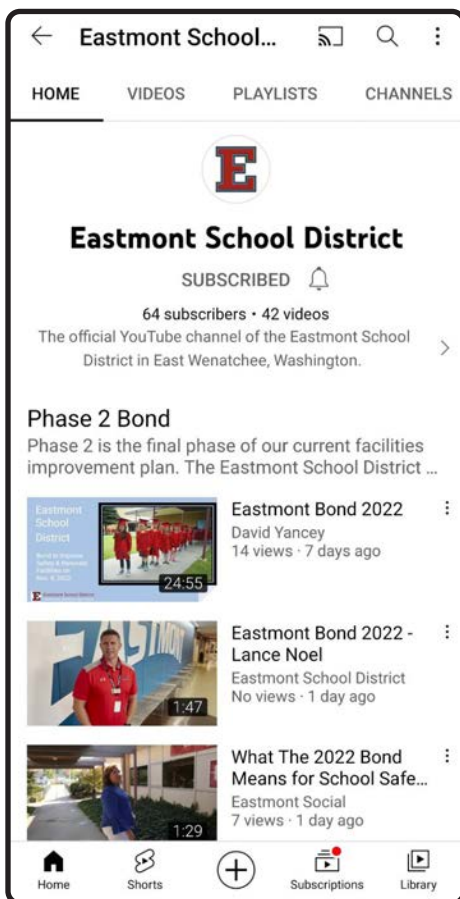
Douglas County Law and Justice Center
110 2nd St NE
East Wenatchee

Rock Island City Hall
5 N Garden Ave
Rock Island



Or mail in your ballot, postmarked no later than the day of the election.

- Online and mail registrations must be received 8 days before Election Day.
- Register to vote in person during business hours and any time before 8:00 p.m. on Election Day.
- Citizens of Douglas County can register online, by mail or in person.
- For more information on voter registration, visit the VoteWA at olvr.votewa.gov.
- Levy tax exemptions are available for senior citizens (61+), veterans and disabled persons.
- For more information on tax exemptions, visit the Douglas County Assessor's website at cutt.ly/dc-taxexemptions or call (509) 741-8521.



Phase 2 Bond Videos

Visit our YouTube channel at cutt.ly/phase2bondvideos for a playlist of informational videos assembled by district faculty and staff about the Phase 2 Bond.

Subscribe to the channel to be notified of updates and new videos on your smartphone.



Join the Conversation!

Follow Eastmont Schools on the following social media platforms:



@eastmontschools

Visit us on the web at www.eastmont206.org